

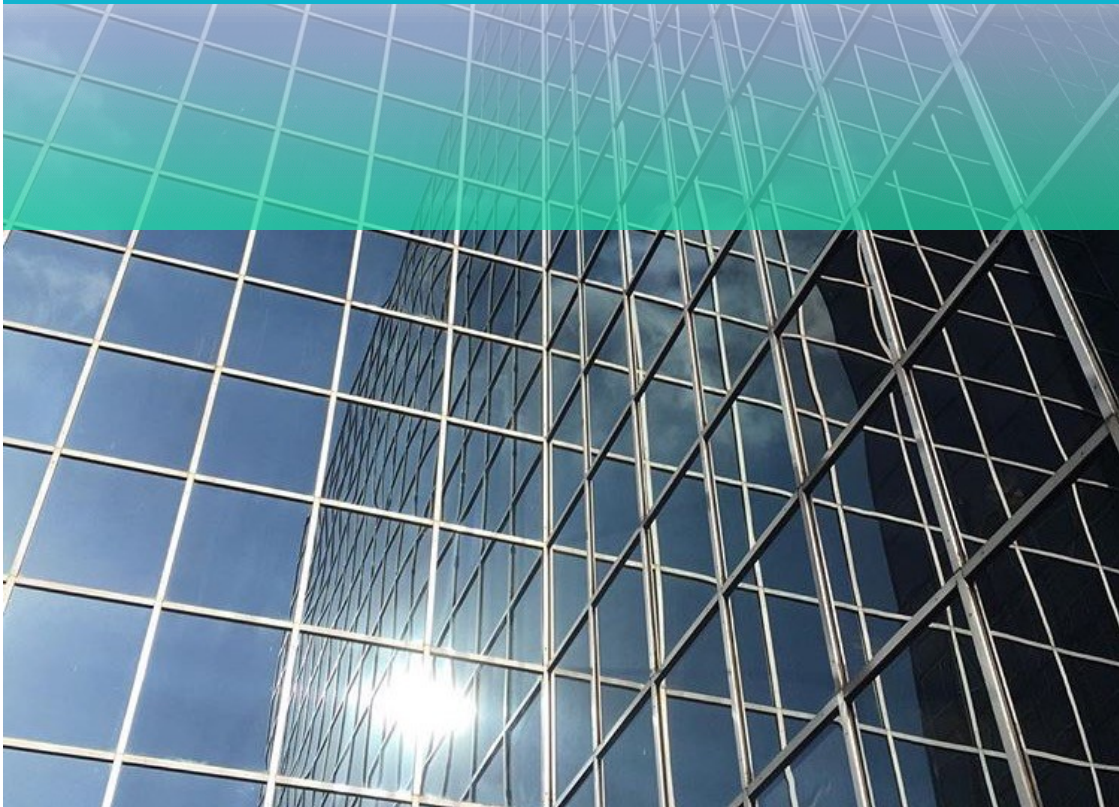


INNOVATIVE FLEXIBLE EFFICIENT

www.lightingcontrols.ltd.uk

LIGHTING CONTROLS LTD PROJECT BROCHURE

**COST EFFICIENT LIGHTING AND MODULAR WIRING SYSTEMS THAT
REDUCE ENERGY CONSUMPTION**



Copyright Lighting Controls Limited © 2017

All rights reserved.



INTRODUCTION

A BIT ABOUT US

Lighting Controls Ltd was established in the United Kingdom in 2004. From its conception the company has set out to produce the highest quality and most cost-effective lighting control solutions for its customers. All our products are designed and manufactured at our Headquarters in Surrey, using superior quality components and the latest production techniques. Our highly skilled production team also conduct research and development on site, in order to offer the most innovative lighting control products available. Our growing business boasts a portfolio that includes both domestic and international projects. At home we are fully committed to the UK economy and are proud of our British built product range.

WHAT WE DO TO CARE FOR THE ENVIRONMENT

Lighting accounts for around 20% of the total energy consumption for a building. It is recorded that 70% of all European lighting installations are either obsolete or at worst inefficient. Building Regulations demand energy efficient lamps are installed and if combined with an intelligent lighting control system, substantial energy savings can be achieved. Our eco-friendly range of controls are not only beneficial to the environment, they will also reduce your energy bills and operating costs. The system utilises devices such as occupancy/absence detectors, light level sensors and timed relays to dim lights when required, switch off lights when a room is unoccupied or ensure that luminaires are off during a set period. Thus producing tangible savings via the reduction in operating hours and the amount of power drawn.

SOME CLIENTS WHO WE HAVE HELPED ACHIEVE THEIR OBJECTIVES:



OUR SERVICES

OUR SERVICES INCLUDE

We provide our own line of lighting control and modular wiring systems, which are both designed and built at our Head Office in Surrey, along with bespoke panels which are created to meet your requirements. If our standard equipment fails to meet the needs of your complex site, we have our own office based R&D team to meet your bespoke requirements. We will provide you with installation drawings and schematics for your project, created by our CAD team. Our highly skilled Commissioning Engineers will programme your system as per your Lighting Philosophy within your Specification, under the guidance of your assigned Project Manager. On completion of your contract we offer Extended Warranty packages to keep your site maintained, with guaranteed response times and reduced costs.



"We have invested a great deal of time and resources to bring customers leading edge products with exemplary customer service. At Lighting Controls Ltd, we believe it's our responsibility to understand your needs through collaboration, organisation and attention to detail."

Robert Walker
Director

WHY CHOOSE US?

Lighting Controls Ltd have been at the forefront of lighting technology for over a decade. We have launched some of the most technologically advanced lighting control products the market has ever seen. Our solutions are quick to install, cost efficient and tailored to your needs. No matter how complex the project, our team of exceptional engineers will configure your control system to meet your exact requirements. Since our company's establishment in 2004, we have earned ourselves a formidable reputation for designing, supplying and commissioning of our systems in almost every type of environment including schools, hotels, casinos, business parks, airports, spas and theatres. You can rely on us to understand your objectives, and to assist you in specifying and executing your ideal lighting solution with your individual lighting requirements in mind.



SITES WE HAVE WORKED ON

ST ANDREWS HOUSE

St Andrews House is 52,000 sq ft of outstanding contemporary office space with terraces from the 6th floor up, located in the centre of London. We completed the CAT A lighting system in Spring 2017. The full DALI system consists of DS10 LCM's in tenanted areas and hardwired DALI 64's in the landlord areas. On site there is a Head End PC with emergency monitoring, scheduling in line with the combined astronomical clock and light detectors for external lighting control.

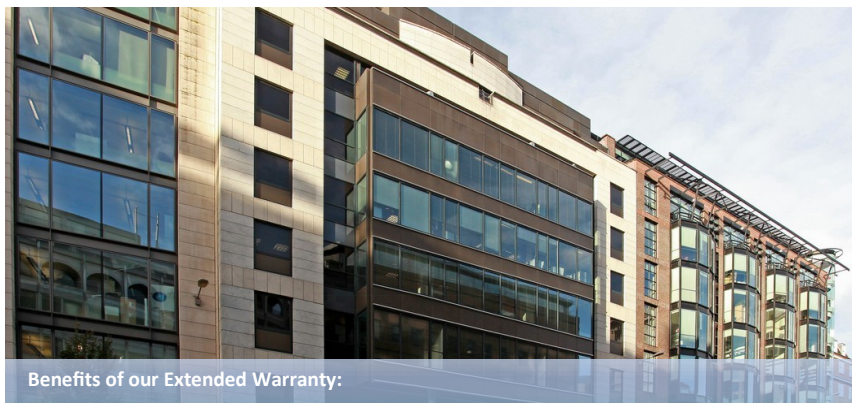
Since the site was completed to CAT A standard, we have been asked to return to amend and augment the system for the new tenants. The specification called for an easy to install, scalable system. LCM's were chosen for ease of installation and flexibility in terms of adaptability.

To benefit the environment we set up



daylight harvesting to not only make a more comfortable working environment but also save up to 60% in energy costs. Energy reporting was introduced to allow the tenants the ability to monitor their energy consumption.

To maintain the site many of the tenants have taken out either our Gold or Silver Extended warranty packages.



Benefits of our Extended Warranty:

- ◆ Significantly reduced callout times to get an engineer to site
- ◆ 100% coverage of the labour cost to uninstall and reinstall defective items
- ◆ Discounted software and firmware updates
- ◆ Set amount of FREE on-site system checks per year
- ◆ Free emergency test procedures conducted remotely (where applicable)

SHOWCASE CINEMA

Located in Southampton's Westquay shopping centre, the Showcase Cinema de Luxe is the UK's first movie theatre to have laser projection and Dolby Atmos in every screen. It is the first of its kind in the south and will boast 10 3D screens forming a key part of the new £70million city centre development, which will also include 20 new restaurants and an exceptional new piazza for the city.

The complex system, completed in Spring 2017, comprises of a mixture of hardwired and plug and play solutions. Each auditorium has an individual control panel with an additional panel for the lighting ballasts. The auditorium lights are linked directly to the projector to prompt the correct lighting scene for guest exit and entry, advertisements and show time. An additional feature has also been added to activate/deactivate all lighting at the complex from a single control switch.



The Head End PC has been set up to control the emergency lighting with custom schedules for the external lighting. We have also interfaced with high powered dimmer packs to control the halogen lights within the bar areas.



Our Head End PC is designed to provide the user flexible control of the lighting from a PC with visual information regarding the state of the lighting. All control devices are graphically displayed as icons on the sites floor lay out. Status and lamp error status are also provided for all DALI devices. Changes to the programming can be made via soft wiring, therefore negating the need to apply physical changes within the ceiling void. Time setting for PIR's, corridor hold and group delays can also be set. An events calendar is provided to allow the client the ability to schedule lighting control events for special occasions, cleaning, re-lamping and emergency testing of the luminaires.



SOUTH OF THE CITY SCHOOL

Lochside Academy in Aberdeen opened its doors in August 2018 and replaced the former Torry and Kincorth academies to become the largest school in the city, which can cater for up to 1,350-pupils.

The £47 million three-story high-tech campus is located on the southern outskirts of the city and has a six-lane swimming pool, fitness suite and a multi-use games hall, all in a separate sports block, along with a 3G pitch which are all available to the local community.



Lighting Controls Ltd were asked to work to a lighting philosophy that utilised multiple networks to control the lighting in all areas including the swimming pool, games hall and corridors from a single point such as the facilities office.

We provided our DS5 LCM along with DALI 64's and CAN PIR's and this enabled full control of both DALI and non DALI fittings throughout the school.

Our Head End was installed to provide tailored scheduling at the weekends as the school required further control of the public areas such as the swimming pool and the sports areas without the need for the facilities staff to be present.



DALI 64 Features include

- ◆ Connection to up to 64 devices including luminaires with multiple ballasts
- ◆ Control and fault feedback indication per luminaire
- ◆ Ballast grouping for efficient control
- ◆ Removable plug-in memory card
- ◆ DALI Inverter compatible.



THE WARNER STAND —LORDS CRICKET GROUND

Lord's Cricket Ground in St John's Wood is widely referred to as the "Home of Cricket" and as such, the recent refurbishment had to be sympathetic with this historic venue.

With a capacity of 2,656 seats, the newly built "Warner Stand" combines outstanding facilities with innovative architecture to provide an improved experience for spectators. The enhanced visitor facilities will also allow MCC (Middlesex Cricket Club) to host more major events as well as providing improved circulation around the ground.

Lighting Controls Ltd were the natural choice to supply the fully hardwired lighting control system which was designed to enrich the visitor areas.



Safety is of course of paramount importance, so an emergency luminaire monitoring system was incorporated into a Head End PC with a BACNET interface to the BMS system. This gives complete and flexible control of the lighting system to the ground's specially trained facilities staff.



MICRO DALI PIR

This neat, compact Presence Detector is an ideal choice for mounting discreetly within a luminaire providing a 6 meter detection range at an average ceiling height of 2.8 m.



BUPA-THE REGENT

Following a successful project at Colmore Row, the electrical contractor, Genlec was keen to use Lighting Controls Ltd again on this exciting new six-storey development. The Regent Building is situated within a popular area on the Manchester Ship Canal and was completed in Winter 2017.

The Regent will become one of the UK's leading private health care centres and will provide a better working environment for staff and consolidate all workers in the area to one central location. It also achieved the new BREEAM Excellent standard by being a sustainable and energy efficient site.

This modern office facility is comprised of mainly open plan layouts with



cellular offices and meeting rooms, each of which feature our state of the art scene set plates. On 5 floors of The Regent there are DALI LCM's and PIR's monitored via our Head End emergency lighting monitoring system.



Our PIR Remote is a highly flexible communication device that communicates to the lighting control network. Up to 8 buttons can be configured with control tasks such as scene changes, overrides, dimming and controlling heating and blinds. It is addressable and so it is tied uniquely to a particular PIR and cannot communicate through any other device. In an open plan office environment, the remote can be configured to only operate with a designated zone without effecting lights within adjacent areas.

CENTRICA LAKESIDE (BRITISH GAS)

Centrica energy company is best known as the parent company to British Gas and is the largest supplier of gas to domestic customers in the United Kingdom. The office space in Staines, known as Centrica Lakeside, was developed to consolidate all operations to a single location. When the site was refurbished in 2014, Lighting Controls Ltd installed LCMs and a centralised control system across three buildings. For convenience the control system was integrated with the IT network, allowing access by any authorised PC sitewide.

Later in Spring 2017, the site was further renovated to include the replacement of dated luminaires. In order to accommodate the changes in user requirements and latest business needs, the lighting control system was also updated and recommissioned.



As of 2011, all of our LCMs (Lighting Control Modules) have a removable memory module which facilitates fast configuration of any LCM that may require replacing. No re-programming is necessary, just the removal of the old memory module and refitting in to the new LCM. This negates the need for recommissioning, saving our clients time and money.

"Thanks for the excellent co-operation received throughout the process. Your commissioning engineer, Peter Krawiecki, was a credit to your business."

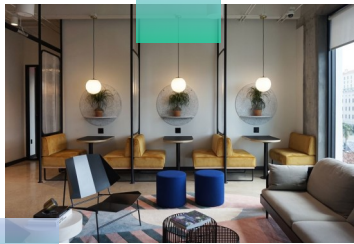
- Martin Markell
Managing Director at Manstal



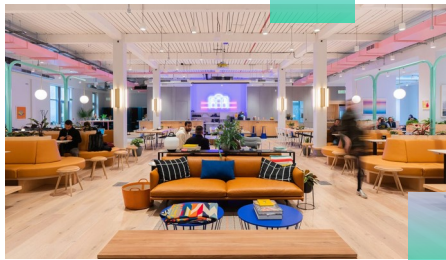
AVIATION HOUSE

Aviation House, formerly the Church of the Holy Trinity, is a grade II listed building at 125-127 Kingsway (formerly Little Queen Street), in the London Borough of Camden.

A thriving area for professionals working in media, law, and finance, WeWork's Aviation House office space features a central location with unbeatable amenities. Spanning 10 floors of the renowned Aviation House building in Holborn, this coworking space features inviting lounges, private offices, and high-tech conference rooms.



Lighting Controls Ltd provided DD1 LCM's and TCP-IP's to control all 1-10/DMX/DALI and Switching fittings as well as CAN PIRs and Scene Plates.



The broadcast LCM's enable swift replacement of drivers when required without the need for an engineer to attend site.

Fire alarm override integration is also present ensuring that if in the event that any fire alarm should sound then the lighting will automatically come on, assisting the fast evacuation of the site. With the night set back fittings the system has been programmed to maintain lighting at 20% in corridor areas when there is no PIR activation which again ensures the safety of personnel.



HIGHGATE JUNIOR SCHOOL

Highgate Junior School is set in the Haringey Conservation Area. The 4,288 sqm scheme provides a high quality co-educational learning facility, reflecting the schools' achievements of excellence



The development retains part of the existing building, Inglehome, a Victorian villa which has been restored sensitively in order to be integrated into the proposed main building. It has been designed to achieve BREEAM 'Very good' and a 100 year lifetime goal.

LCMs have been used in the classrooms, with DALI 64s in the corridors and reception areas. Also, long range PIRs have been placed in corridors and scene setting has been implemented in the Sports Halls. The external lighting has been replaced with presence detection sensors and a time clock, ensuring energy efficient control. White boards have also been included in the control network to give staff individual input on a room by room basis.



SINGLE RELAY DALI BALLAST

The LUX 1R is a single relay DALI ballast that is mounted between the DALI line and a switching fitting, integrating the switching fitting to the Dali system. It is mounted in a standard single inlet 20mm conduit Besa box which facilitates quick installation.

Wiring is via push fit cage clamps for mains and Dali with a mains switch current of 6 A. The unit can be installed with any dali control system enable the fast installation of individual luminaires.



ALDWYCH HOUSE

Aldwych House is situated near the Strand in one of the capital's busiest thoroughfares. The refurbishment of this high-end office space called for a sophisticated bespoke lighting controls philosophy. The renovation of levels 5 through to 8 feature a CAT A fit out with Head End emergency monitoring capability. The specification also called for intelligent DALI LCMs which utilise state of the art PIRs and custom scene set plates. Daylight linking is incorporated in to the system to harvest natural light to further reduce energy costs. Lighting Controls Ltd.'s system effectively and efficiently controls the luminaires in the buildings atrium and lightwell to dramatic effect, in keeping with design concept.



On the lower ground floor, ground floor and levels 1 and 2 a full CAT B fit out was included for Weworks, the global network office space provider. Both presence and absence detection sensors were used in order to achieve the company's requirements for a system that would offer a flexible and adaptable work space for its creative tenant client base.



Our PIRs (presence detectors) detect movement using a sensor for automatic lighting control. There is a Progressive Sensitivity function to eliminate false triggering. As well as an integral lux detector, enabling the sensor to control day-light linking. Daylight linking can be configured either to keep lights off when there is sufficient ambient light, or used as part of a closed loop to maintain a pre-set luminance level in a dimmable system.

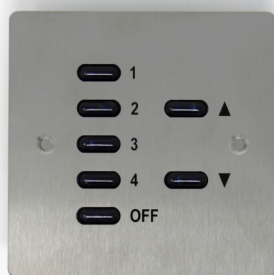
SONY LONDON OFFICE

In Winter 2017, we completed the total office refurbishment of Sony's London office. Although the site had an existing lighting control system, the client decided as part of the upgrades and changes, they would remove the old system and upgrade.



The hardwired lighting control system consists of a central Head End PC, with scene setting, presence detection, an RS232 interface and hand held infrared remote controls. The system not only has a vast amount of features, controlling various luminaires, it is also easy to control and maintain.

The complexity of the system required us to work closely with the main contractor in order to satisfy the clients exact needs.



Our Scene Set Plates can be programmed with our LCMs and hardwired control modules to permit the control of different lighting groups at different lux levels. They are available in custom colours as well as white and our standard brushed stainless steel finish. They are available in 5-button, 2-button and 7-button configuration. Control plates have blue LED back lighting for location and scene identification, and scenes can be programmed by a hand-held programmer, wirelessly via Bluetooth from a PC, or by using the plate buttons (eliminating the need for specialist equipment).



LIGHTING CONTROL MODULES WITH MODULAR WIRING

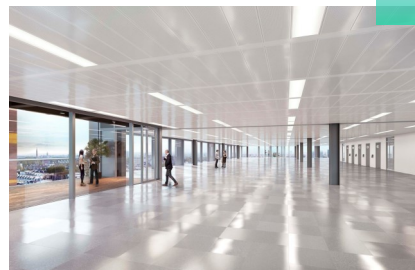
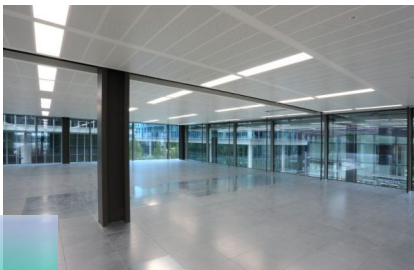
4 KINGDOM STREET

4 Kingdom Street is a 10 storey office block located in Paddington Central. Each floor of the building is approximately 15,000sq ft and has been redesigned with large corner terraces and glass panelled meeting rooms. The building design is intended to complement the high end area in which it is located and make use of all natural light available.



The system for this site had to be high quality, quick to install and flexible for future alterations. The main contractor, Wates, chose to install our LCM's with our modular wiring to meet the specification.

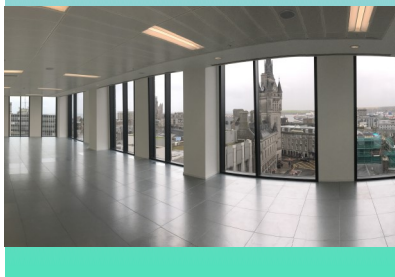
The project is currently in the tenant fitout stage where the adaptability of the lighting control system has allowed the installation of offices, meeting rooms and telepresence rooms.



INTELLIGENT LIGHTING CONTROL SYSTEM WITH A HEAD END PC

MARISCHAL SQUARE OFFICE REDEVELOPMENT

Marischal Square is the latest, most significant development designed to transform the centre of Aberdeen. It is a place where a refreshing mix of high quality elements; office space, coffee shops, restaurants, a 4-star Residence Inn by Marriott and a bright, accessible central public space, come together to create a fresh, vibrant, new central area in the heart of Aberdeen's city centre.



The Marischal Square project consists of two buildings on one combined system. This is monitored by our Head End PC utilising split tenancy controls, global controls and daylight linking with a total of 400 LCMs (Lighting Control Modules).

We completed the CAT A lighting system in Autumn 2017 and managed to secure a second future contract at South of the City School with Richard Irvine Energy Solutions due to our outstanding service provided at Marischal.

"I was very pleased with the overall service Lighting Controls Limited provided me with on this project. The Project Managers were supportive and accommodating for any changes that were required and I look forward to working with them in the future."

- Paul Douglas
Project Engineer at Richard Irvine



HARDWIRED DALI GATEWAYS WITH MODULAR WIRING

WESTSIDE—HEMEL HEMPSTEAD

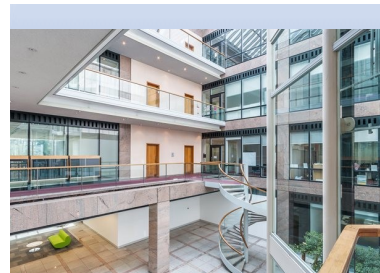
Westside has recently been refurbished into the sophisticated office complex and elegant commercial workspace situated in the heart of Apsley. It is excellently connected to London via both rail and road, comprising of four adjoining blocks, each comprised of four floors. Placed between Westside Two and Three, the central atrium houses an on-site café as well as multiple communal seating areas which provide an ideal location for informal meetings.



The site aims to ensure a tranquil working environment, by combining elegant design and comfort whilst bringing together private office space and communal business lounge areas. Currently two of the buildings are occupied by Epson and HSBC.

Similarly to our 'Tamesis 1' Project, we provided this site with intelligent MDBs (Modular Distribution Boards), modular wiring with fan coil control.

Our highly technical and flexible approach has allowed us to cater for multiple tenants each requiring individual Cat B fit outs to a high standard. This modular system was specifically chosen for its flexibility to change the lighting layouts for future tenants, using a soft wired system as opposed to being conventionally hardwired.



PLUGGABLE LCM WITH PRESENCE DETECTION

REGAL HOUSE

Regal House is located within the prestigious area of Covent Garden on the bustling junction of Long Acre, James Street and Neal Street. Three floors of light and executive office accommodation, cellular offices, meeting rooms and reception areas are contained within the modern building, totalling 10,791sq ft.

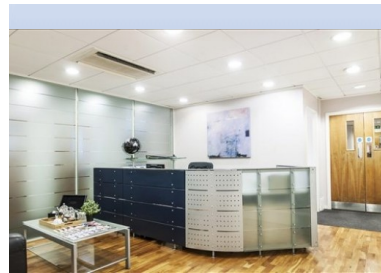


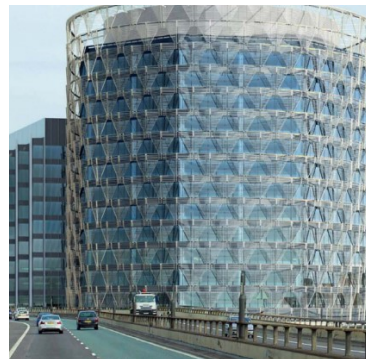
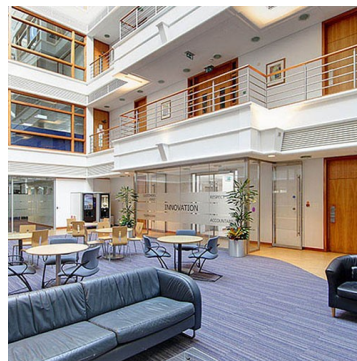
Whilst delivering a Cat A fit out solution using LCMs, PIRs and exposed services to the unoccupied floors. The first floor which is already in use, was upgraded to Cat B fit out, all being completed within the original time frame.

The client chose LCMs in order to achieve a system that would offer a flexible and adaptable workspace for various tenants.

"I'd like to thank Lighting Controls Ltd for being supportive on such fast-track fit out, along with their great pre and post contract care."

- Ray Hallett
Director at Capital Power and Data





LIGHTING CONTROL MODULES

We are able to offer our customers a variety of lighting controls modules (LCM) that include both Pluggable and Hardwired options. The enclosures for our LCMs have been designed for ease of installation, Pluggable units are complete with 'Z' bolt fixing rails on the reverse and all connections to the unit can be pre-wired. Both units contain a removeable memory chip that facilitates fast configuration of a replacement LCM should this be required. Our LCMs can be programmed wirelessly via Bluetooth from a laptop enabling a swift commissioning service. They are also available in different colourways if an alternative RAL number is required.

Pluggable LCMs

We offer various types of Plug-In LCMs: The DS-S5 or DS10 LCM, and the DD1 LCM10-S10



Our **DS5/DS10 LCM** uses Dali protocol to control up to ten lighting channels, five of which can also incorporate switching relays for the controls of non-Dali fittings. This facilitates flexibility upon installation allowing multiple fittings with DALI control gear to be programmed via one LCM. Fittings can be 'daisy chained' and still be individually addressed ensuring flexibility for future cat B requirements.

Our **DD1LCM10-S5 or S10 LCM** can be used to control up to 10 channels with all channels being programmable for Dali, DSI, 0-10 and 1-10. In addition, channels 6-10 feature switching relays. This LCM has all of the functionality of the DS10 but with the added advantage of controlling DALI, 0-10, 1-10 and non-dimmable fittings. These LCM's are broadcast Dali LCM's.

Hardwired LCMs

Lighting Control's range of Hardwired Lighting Controllers comprise products with 1 or 2 modules with 6 relays per module. The relays in each controller have both normally open and normally closed contacts.

Hard wired LCMs can be programmed in the same way as our other devices, wirelessly via Bluetooth from a laptop.





PRESENCE DETECTORS

We produce three system PIRs, a CAN PIR, a DALI PIR and a Micro Dali PIR. The CAN PIRs connect to our pluggable LCMs and both DALI PIR's connect with our hard wired solutions. They can all be programmed to work in either a presence or absence mode and have a wide range of sensitivity and time out settings.



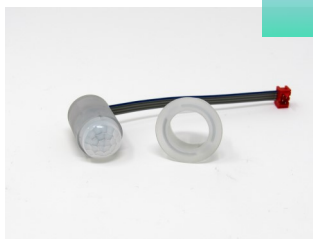
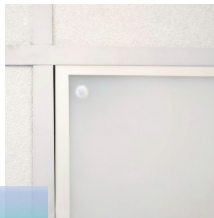
All our PIRs feature our 'Progressive Sensitivity' function that eliminates false triggering. There is an integral lux detector to measure daylight levels, ensuring that lights will remain off when sufficient ambient light is available, therefore reducing energy costs.



We can also provide a range of stand alone mains PIRs either as recessed or surface mounted. These PIRs have adjustable time and lux settings.

High bay PIR's are also available for use in stairwells and with high ceilings.

Our Micro Dali PIR is an ideal choice for mounting discreetly within a luminaire



Our PIRs can be produced with custom painted bezels upon request. When an order is placed, bezels can be manufactured according to the RAL number supplied.

SCENE SET PLATES

Our range of Scene Set Plates are utilised when multifunction application is required over a cellularised area of lighting, for example reception areas, meeting rooms, auditoriums and hallways.

They can be supplied as 2, 4 or 8 scene plates, combined with 'off' and 'dimming' capabilities on a single, one gang plate. From the plate you can call Scenes 1 - 4, Raise, Lower, and Off. Our scene plates are customisable and can be designed to suit your requirements. The Scene Plate at the bottom of the page was designed for use in a Special Educational needs facility. It has larger buttons that light up different colours when pressed.

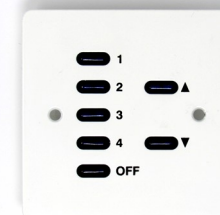
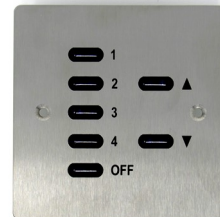
Our plates have blue LED back lighting for location and scene identification and can be programmed at point of installation.

These Scene Set Plates match our Switch Plates and conform to a standard single-gang plate profile, fitting 35mm surface or flush mounted back boxes. They are available to order in various colours, dependent on the RAL number that is required. Switch Plates from our architrave range can also be requested.

Connection to the system is by 4-core cable with a push-on male plug to the scene set plate and an RJ12 connector to a Lighting Control Module.



At our project at Showcase Cinema, scene setting was provided within each auditorium for enhanced customer service.

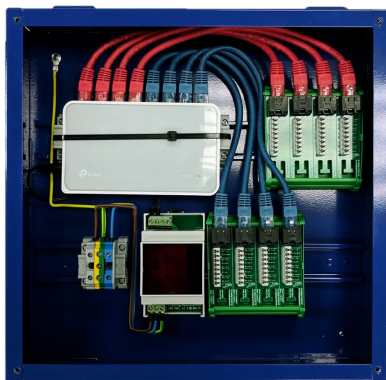




CUSTOM PANELS



In our production facility we produce bespoke panels to suit individual requirements and installations. These panels facilitate easier installation for the electrical contractor who are able to wire to pre-labelled terminals within the panel as opposed to wiring to individual modules. Terminal Labels are produced by our CAD team based on the drawings supplied to us.



Our panels can be produced using any third party modules and tailored to any specification. Each panel is individually checked for functionality and operation before it leaves our facility. Our metal work can be produced in any RAL number depending upon individual requirements. Custom sizes are also available.



and
initial

that

called

standard





TOUCH SCREEN FLOOR CONTROLLER

The LC-TFC is a compact touchscreen interface with several additional options that enable this highly versatile product to satisfy the needs of many different environments. All models include an integral smart, mains powered UPS to maintain settings and schedules preventing any loss of information.

There are two hardwired versions of the LC-TFC available, both of which require a mains supply and provide lighting scheduling. They are connected to the lighting control network via a CAT 5 cable.

Base model variations :

- ◆ A riser unit, including area controller if required, surface mounted, with screen protection cover. **(LC-TFC)**
- ◆ A Recessed model with a back box for wall mounting, either stainless or painted finish. **(LC-TFC/BB)**

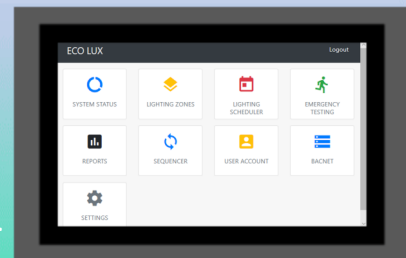
KEY FEATURES

Lighting Scheduler-Switch lighting on/off at specific times.

The scheduler supports re-occurring events on a daily, weekly or monthly basis and flexible monthly repeat patterns such as "1st of the month" or "Last Saturday of the month".

User permissions to control access to specific lighting zones.

'Add-on' options to tailor each controller to individual requirements.



ADDITIONAL OPTIONS AVAILABLE

Emergency Testing Module-EM

Floor Plan Module -FP

BACnet Module-BAC

Sequencer Module-SQ

GRAPHICAL HEAD END

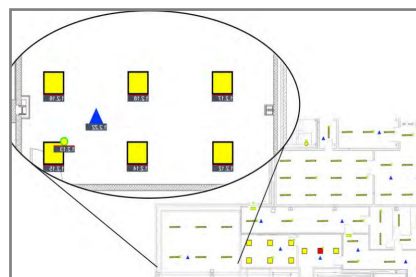
Our head end is a Graphical representation of all the devices connected to the lighting control system, such as PIRs, Scene Plates and luminaires. It allows you to interact with all devices on the system, see status, change settings, alter 'time-outs' and adjust luminaire brightness.

Every device is shown within the graphics and is interactive. It gives live status, showing whether the devices are on, off or not working to give the end user an instant overview of how the system is functioning. The software can also calculate the approximate energy use of the lighting to assist your site in being as energy efficient as possible.

To the right is a screen shot of our Head End software on a mobile phone, showing the live status of a single luminaire.

In addition to the Graphical Head End is our emergency monitoring software. This can schedule automatic testing on the emergency luminaires, generating a report for the end user.

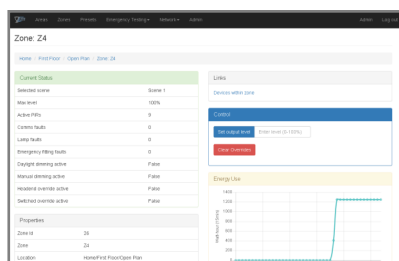
Upon the completion of the commissioning of your lighting control system, the graphics are uploaded to your Head End PC we supply to you ensuring a complete system with training at handover.



Each area controlled by the ecoLUX Graphical Interface is represented as a floor plan with visualisation of lighting status

KEY FEATURES

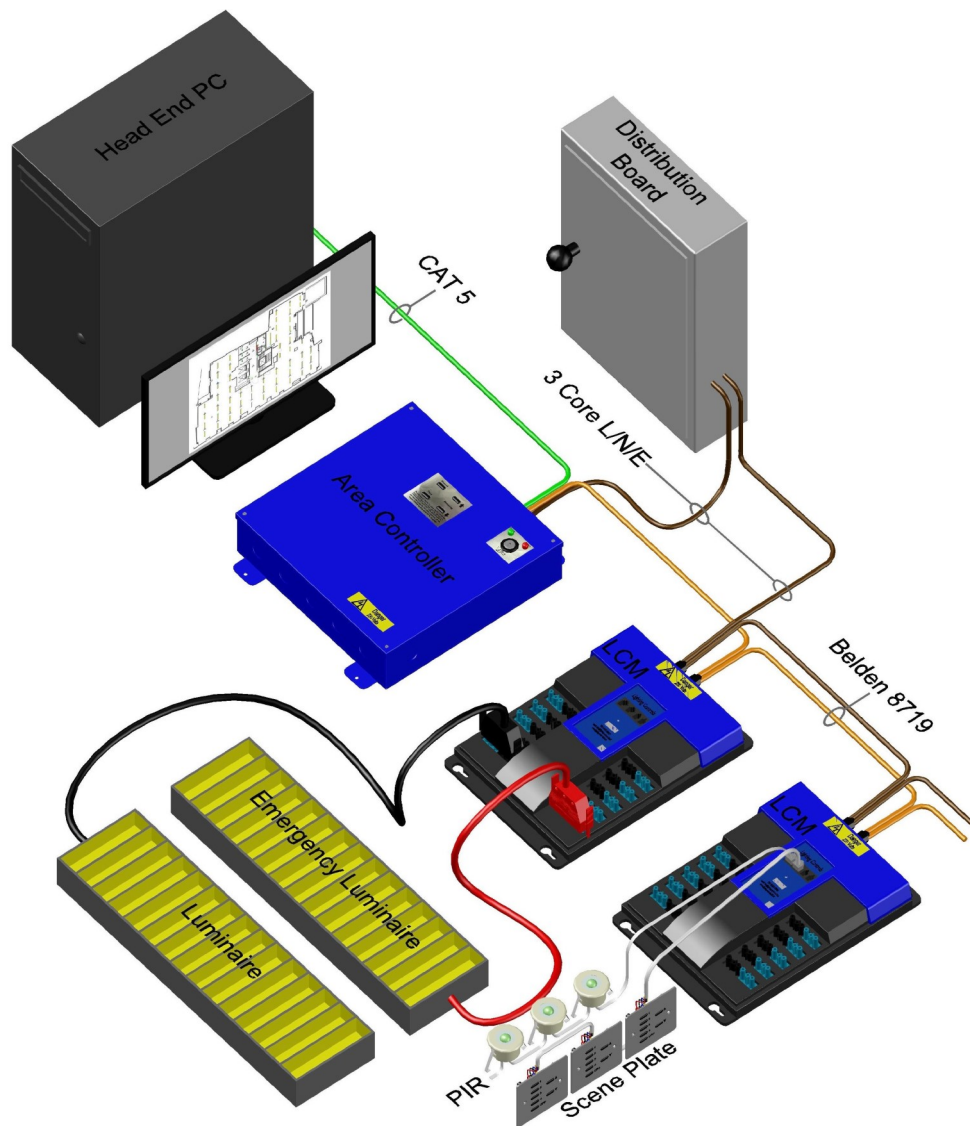
- Central monitoring down to individual light fittings.
- Control and manage the testing of emergency lighting .
- Adjust lighting levels remotely by zone or individual fitting, and update PIR settings.
- Detailed energy monitoring.
- Enables remote diagnosis by Lighting Control engineering staff without a site visit .
- Use of a tablet PC enables adjustments to be made in situ, rather than from a central location where changes to lighting levels cannot be observed in real time.



Screen shot of our Head End software



TYPICAL SYSTEM SCHEMATIC



EXTENDED WARRANTIES

YOUR OPTIONS

Your products are warranted for a period of two years against failure due to manufacturing defects. In the unlikely event that products supplied by Lighting Controls should fail due to a manufacturer's defect please call us on 01252 470 027 during normal working hours, have your installer remove the product and return it to our address. Your product will be repaired or replaced then sent back to you or your installer at the discretion of Lighting Controls Ltd.

THE **SILVER** OPTION OFFERS YOU:

- ◆ One on-site system check per year **FREE**
- ◆ A given discount of the cost of repair or replacement of parts
- ◆ The labour cost in uninstalling and reinstalling the item that was defective is covered. 100% during years 1 and 2, 50% during years 3 and 4, 33% during years 5 and 6, and 25% from year 7 onwards if this extended warranty is valid
- ◆ A guarantee that our engineers will be at your site to replace or repair the product within 3 working days of you informing Lighting Controls Ltd of your problem

THE **GOLD** OPTION OFFERS YOU:

- ◆ Three on-site system checks per year **FREE**
- ◆ Software and firmware updates **FREE**
- ◆ Emergency Test Procedures conducted remotely (where applicable) **FREE**
- ◆ 100% repair or replacement of faulty components
- ◆ 100% coverage of the labour cost of uninstalling/reinstalling the faulty item if this extended warranty is valid
- ◆ A guarantee that if we cannot solve the problem remotely, an engineer will be on site within 48 hours of our being informed of your fault

OFFICE CONTACTS

To request a quotation or for general queries:
maintenance@lightingcontrols.ltd.uk

To place an order:
[Louise Jordan \(louise.jordan@lightingcontrols.ltd.uk\)](mailto:Louise.Jordan@lightingcontrols.ltd.uk)



GET IN TOUCH

www.lightingcontrols.ltd.uk

To find out more about the range of products and services we offer, and how these solutions can benefit you, **contact us today.**



LOCATED AT

5 Bourne Mill Business Park
Guildford Road
Farnham
Surrey
GU9 9PS

CONTACT DETAILS

General Enquiries
info@lightingcontrols.ltd.uk

Technical Assistance
technical@lightingcontrols.ltd.uk

Sales
sales@lightingcontrols.ltd.uk

Quotations
quotations@lightingcontrols.ltd.uk

Telephone
01252 470 027



[linkedin.com/company/
lightingcontrols](https://linkedin.com/company/lightingcontrols)



lightingcontrols.ltd.uk



Lighting Controls Ltd